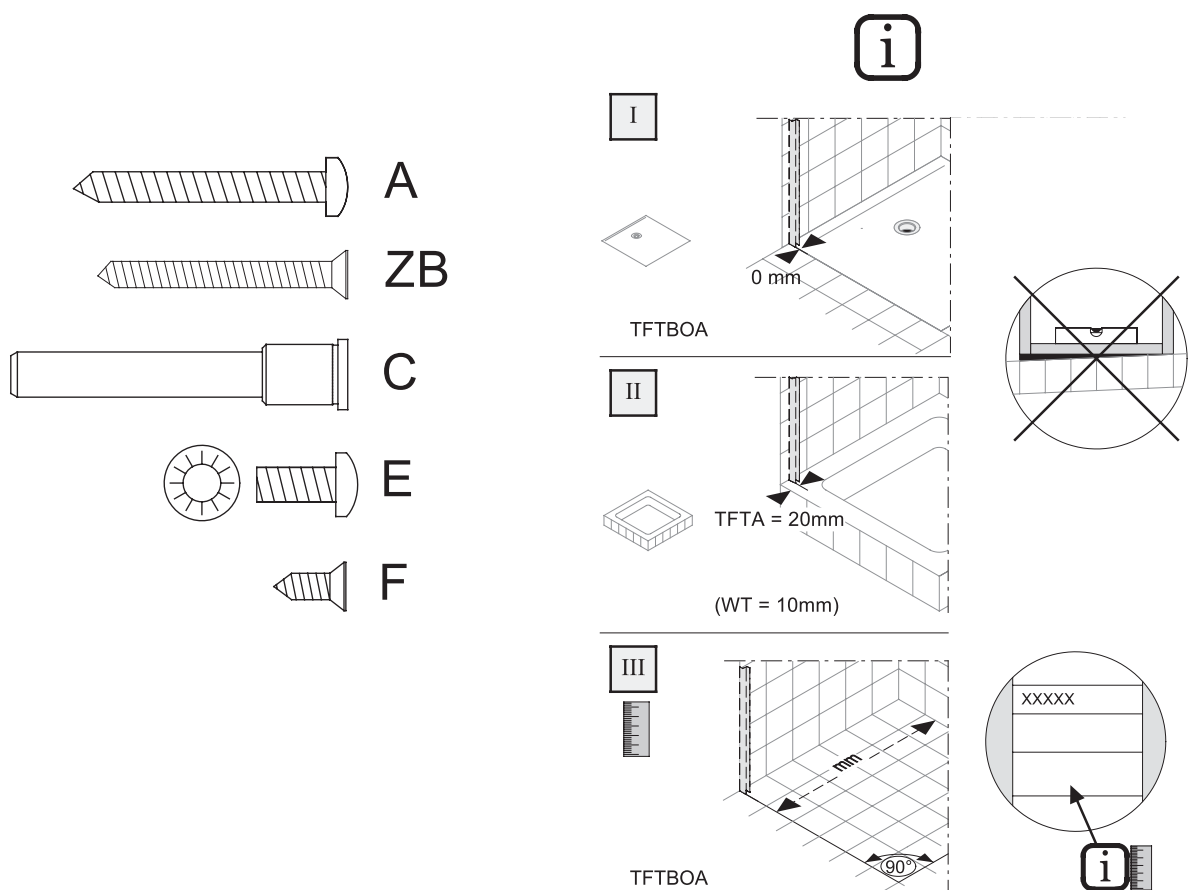




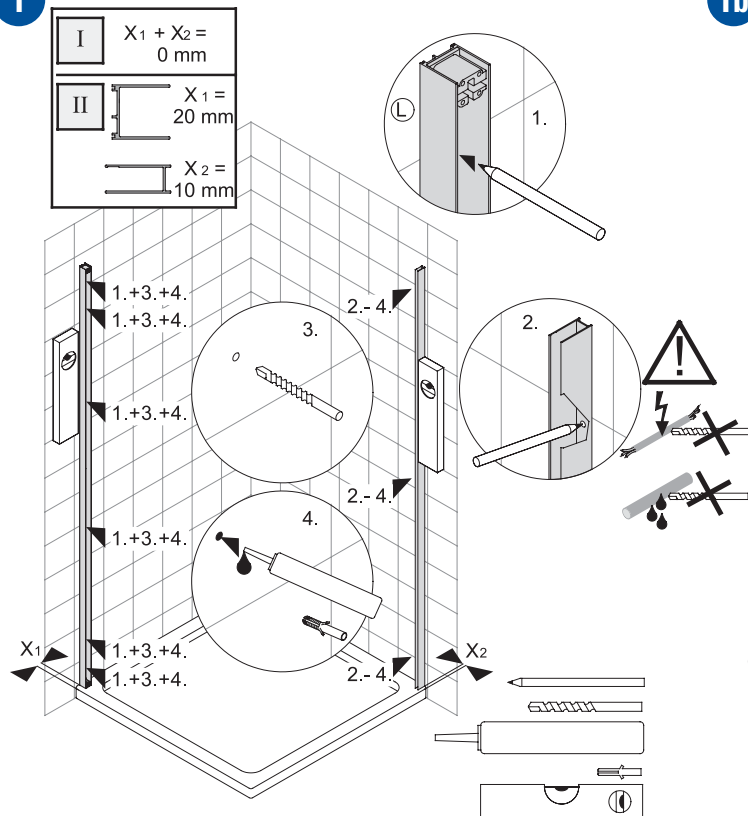
- (D) Vor Montage bitte Gebrauchsanleitung lesen!
- (GB) Please read the instructions of use prior to starting installation work!
- (F) Prière de lire le mode d'emploi avant de procéder au montage !

- (I) Prima del montaggio leggere per favore le istruzioni per l'uso!
- (NL) Lees voor de montage de gebruiksaanwijzing door
- (PL) Przed przystąpieniem do montażu przeczytaj instrukcję użytkowania!

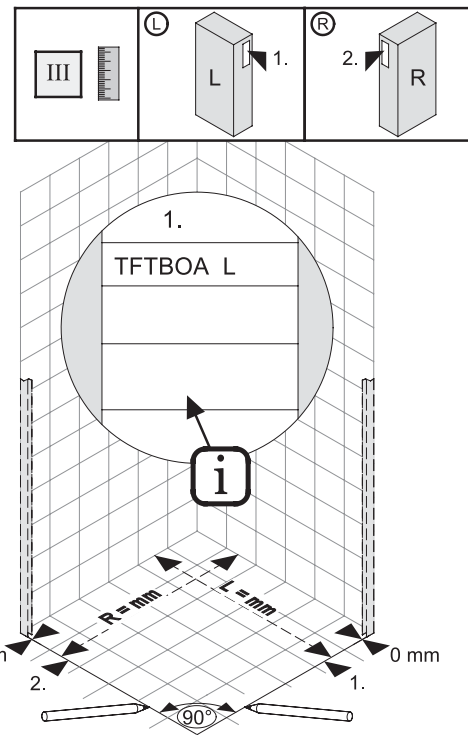


TFTA L

1

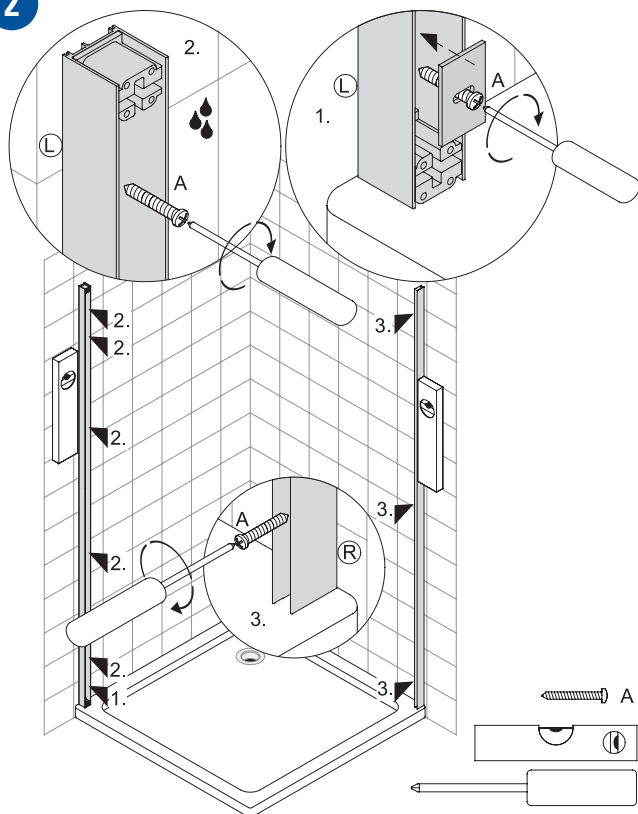


1b

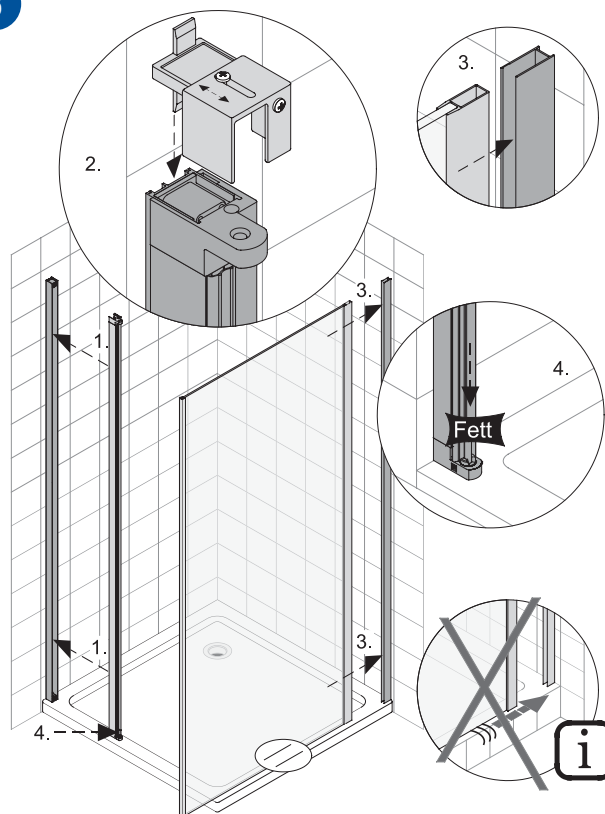


TFTA L

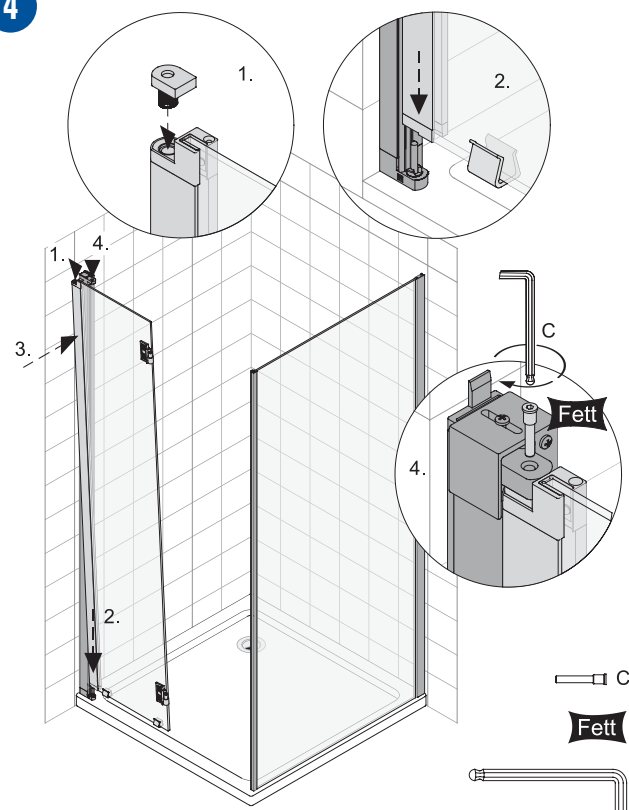
2



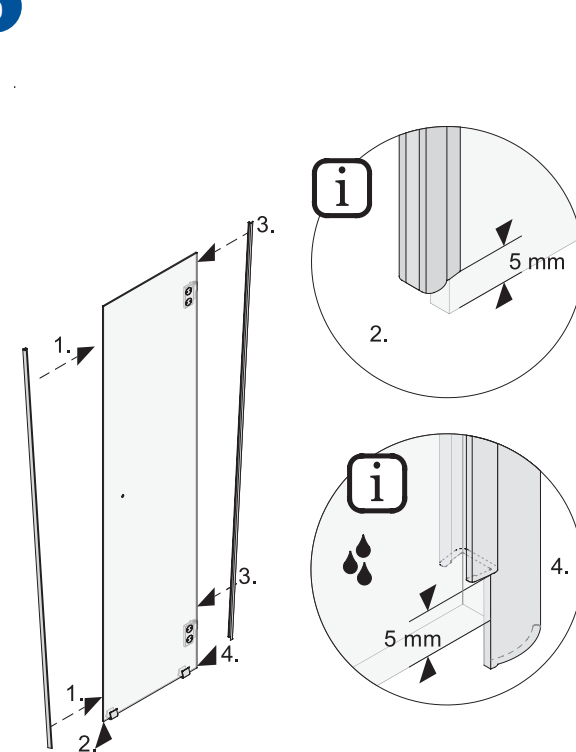
3



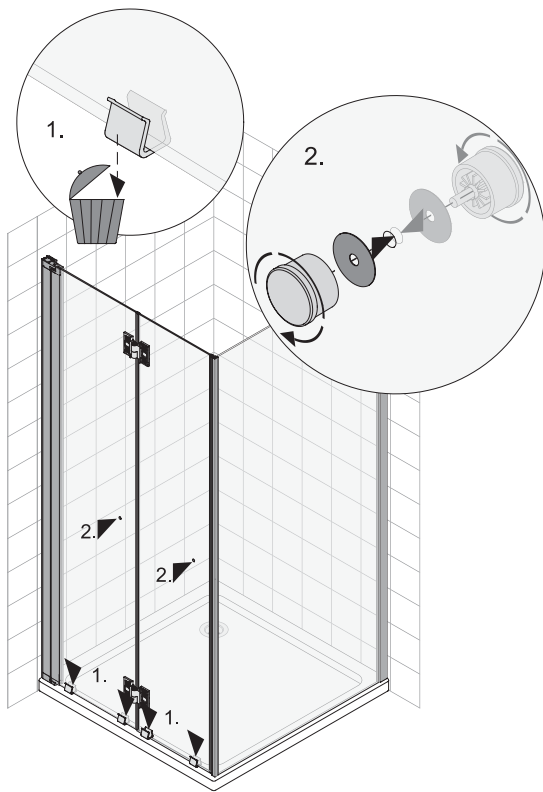
4



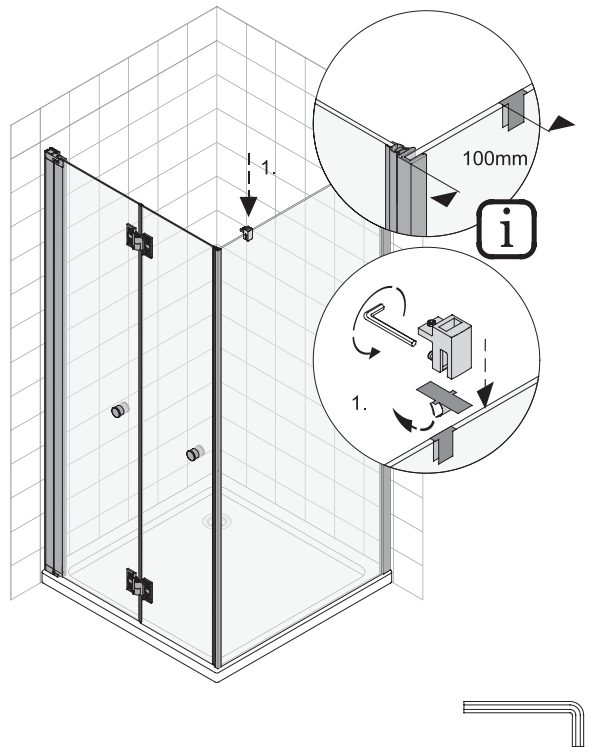
5



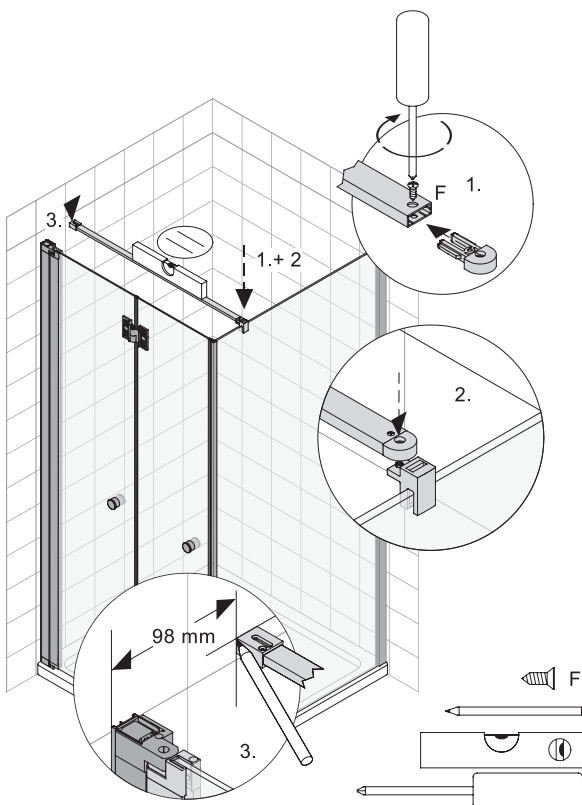
9



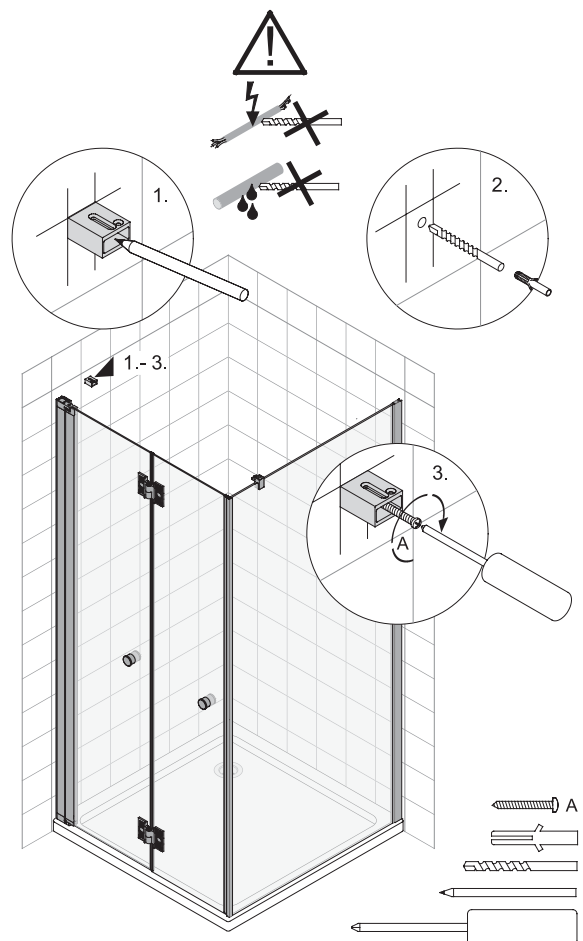
10



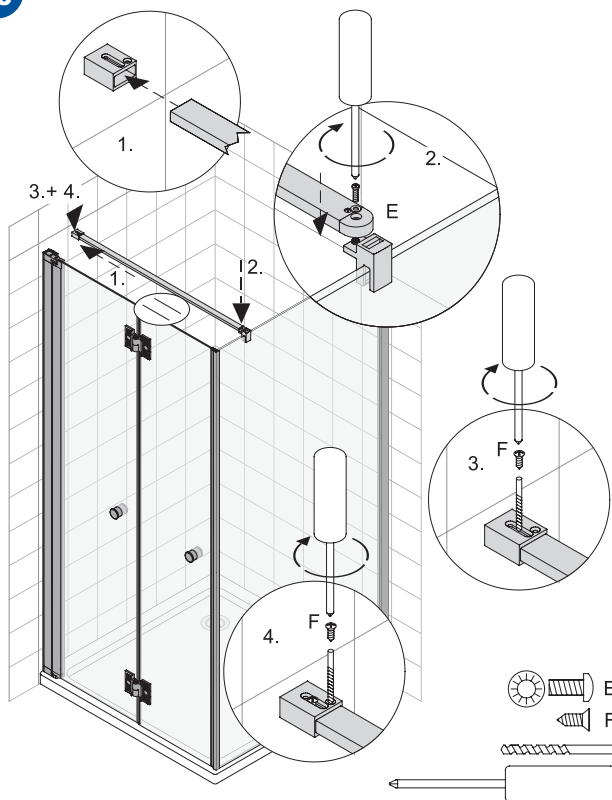
11



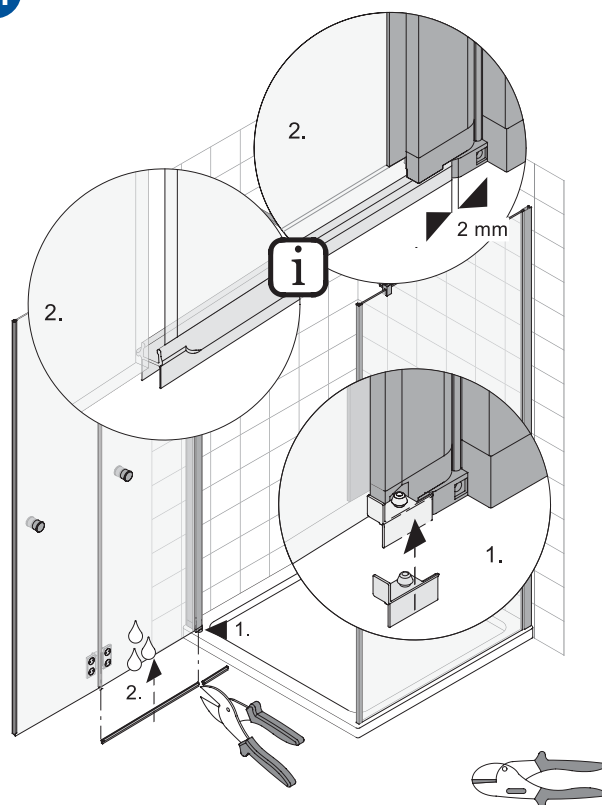
12



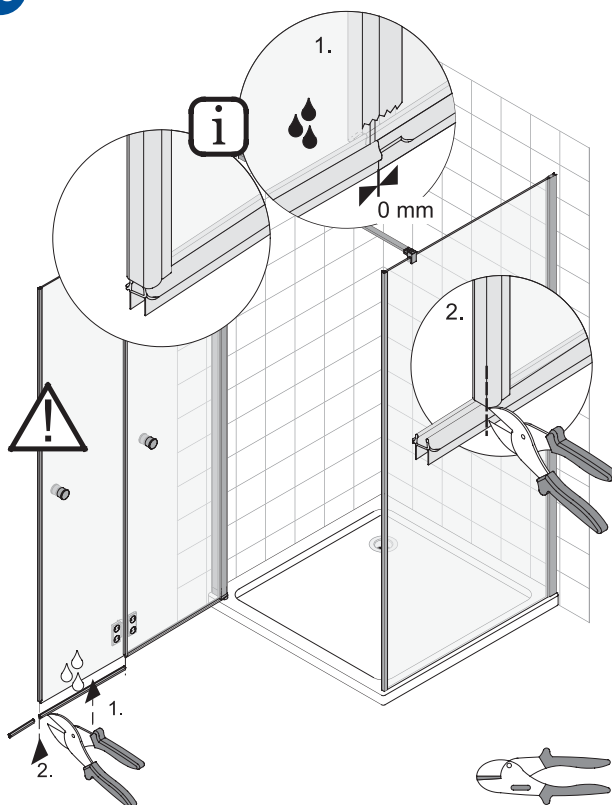
13



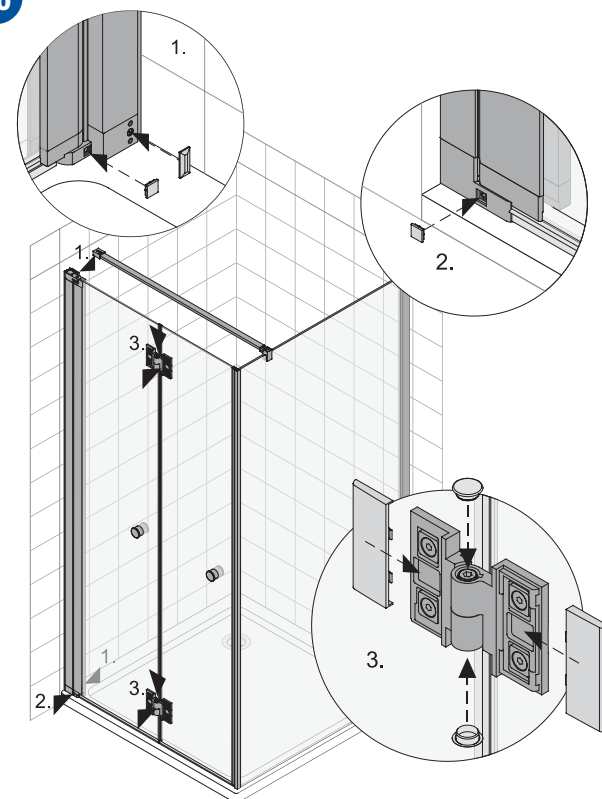
14



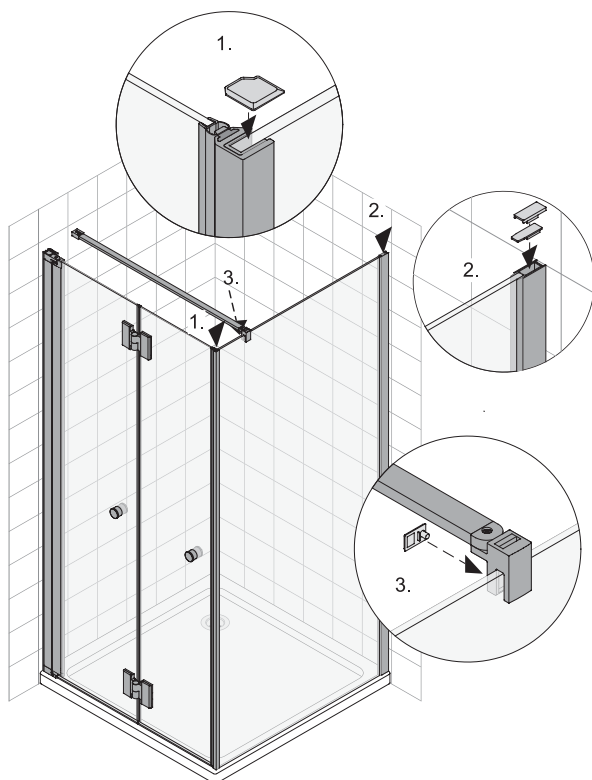
15



16

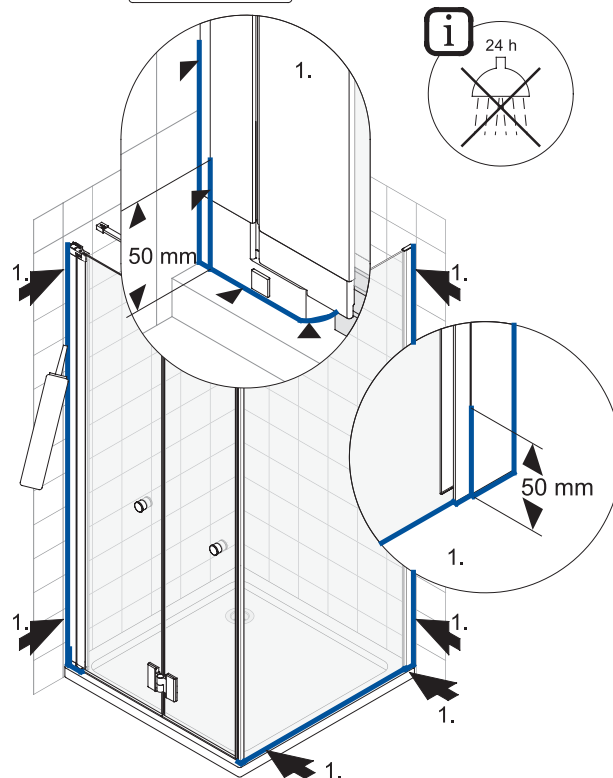


17



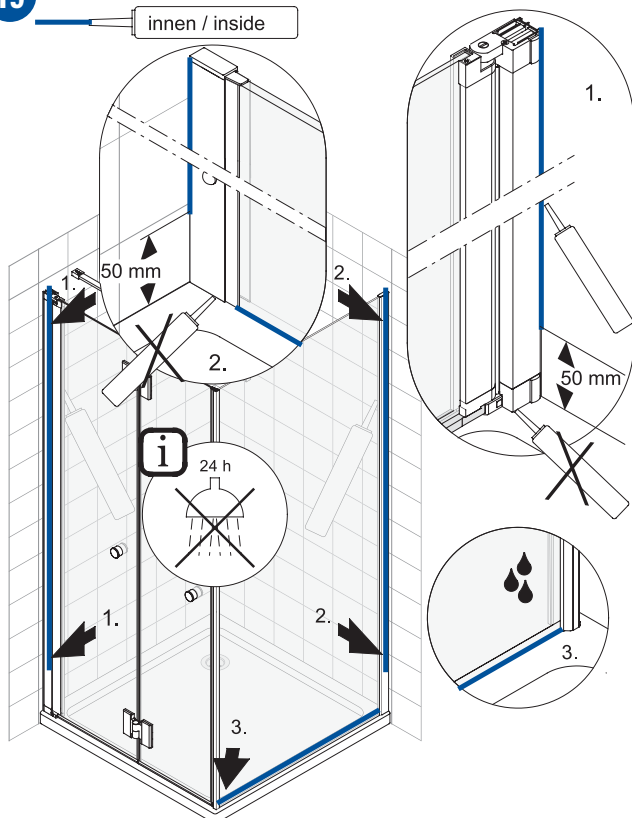
18

außen / outside

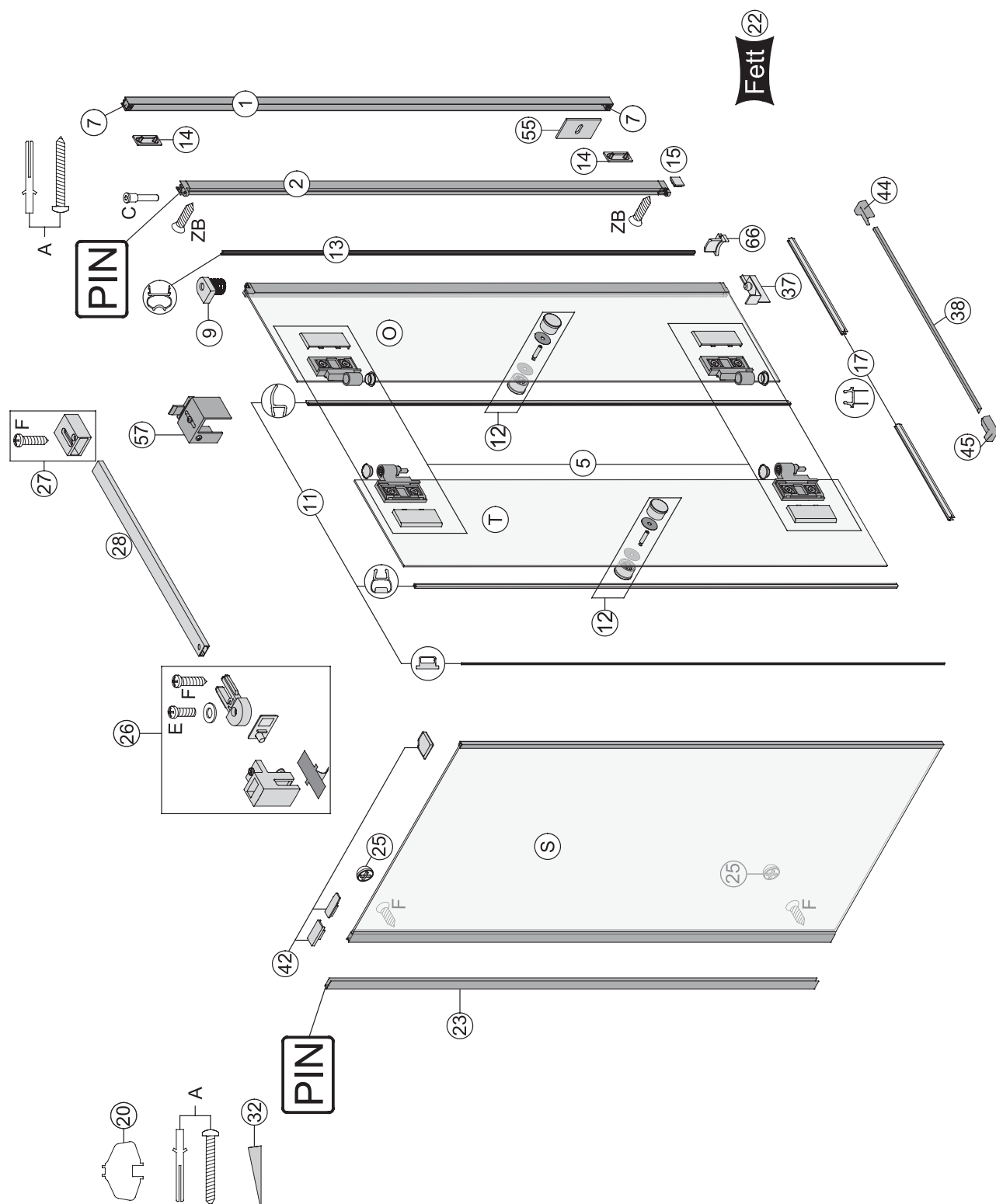


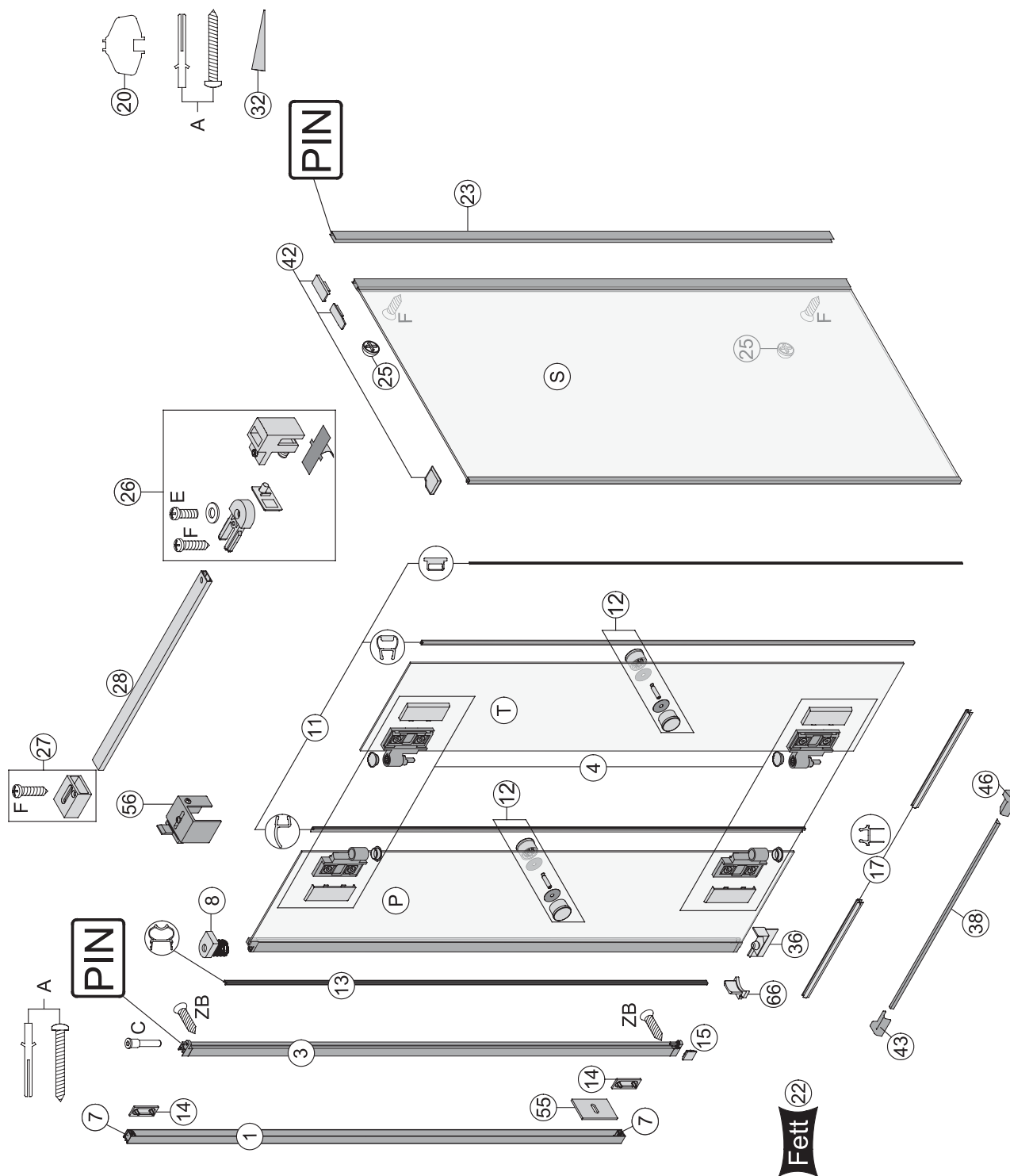
19

innen / inside



TFTA R - WT





PIN: 0000
123456789012345678
123456789012



Ersatzteil / spare part / Pièce de rechange / Onderdeel / Część zamienna / Parte di ricambio

Technische Änderungen
behalten wir uns vor.
Für Druckfehler oder
technische Verwechslungen
übernehmen wir keine
Gewähr

We reserve the right to
technical amendments. We
do not take responsibility for
printing errors or technical
confusions.

Technische Veranderingen
voorbehouden. Voor
drukfouten en technische
verwisselingen stellen wij ons
niet aansprakelijk.

Nous nous réservons le droit de
procéder à des modifications
techniques. Nous n'assurons
pas de responsabilité pour
des erreurs techniques ou des
fautes d'impression.

Ci riserviamo il diritto di apportare
modifiche tecniche senza obbligo
di preavviso. Decliniamo ogni
responsabilità per errori in fase di
stampa riguardanti ns prodotti e/o
loro specifiche tecniche.